

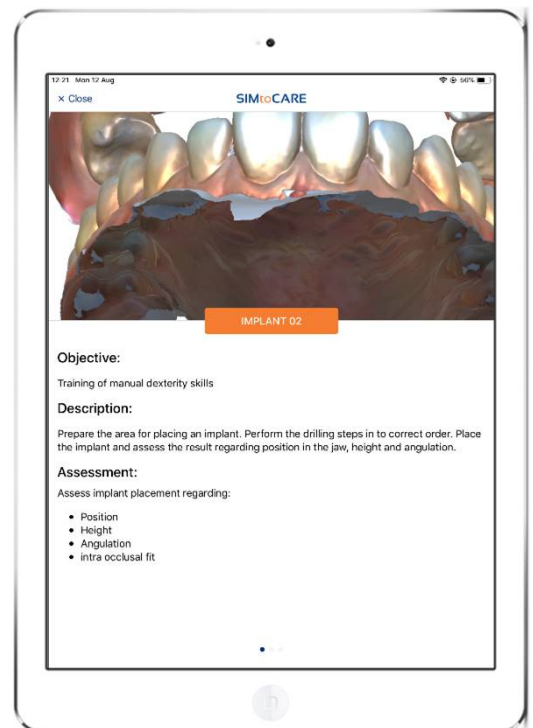
SIMtoCARE Dente



Patent pending

The SIMtoCARE Dente is the next generation training simulator mixing Virtual Reality with Reality

- 4k High resolution 3D display, no glasses
- High fidelity haptics in a large 100x100x100 mm³ working range
- Modular and adjustable upper and lower jaw for finger support
- Adjustable patient head
- Easy import and voxelization of intraoral scans, export to external tools
- Supports various dental procedures
- Realtime objective assessment and cross-sectional views
- Unprecedented realism of simulated patient cases to support safe and efficient learning



website: www.simtocare.com

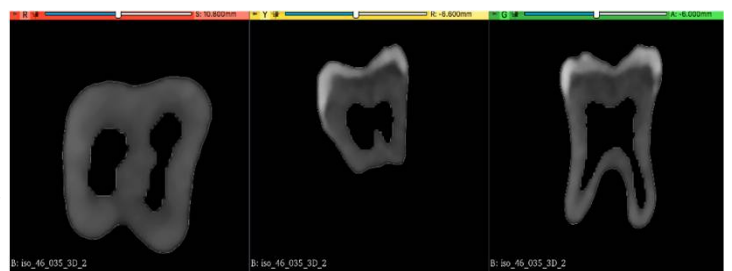
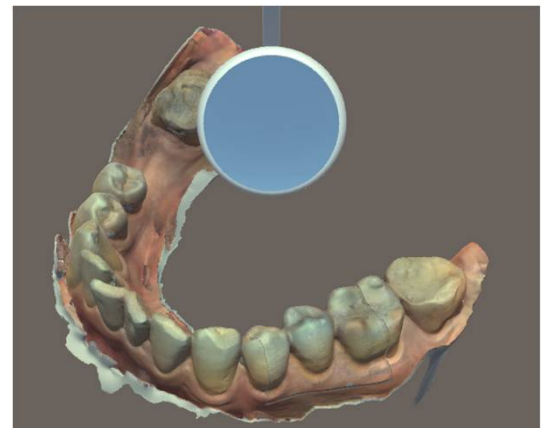
e-mail: info@simtocare.com

SIMtoCARE Dente



The SIMtoCARE Dente is height adjustable and can be used above a desk to save space

- Mixed Reality view combines VR with Real objects
- Instruments and tools to support manual dexterity, cariology, crown prep and implantology procedures
- Tooling to import micro CT scans to create tooth models
- Tooling to merge CT scans with intraoral scans
- Student App for easy operation
- Teacher app for remote viewing, interface to planning and reporting tools.



website: www.simtocare.com

e-mail: info@simtocare.com