

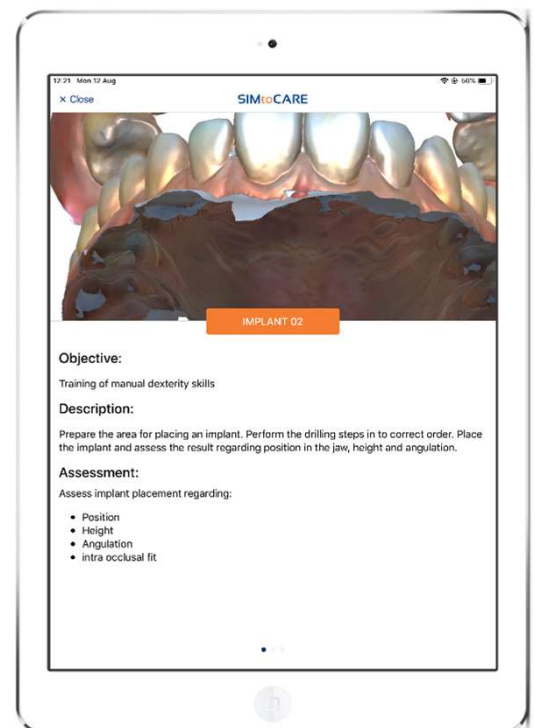
SIMtoCARE *Dente*



Patent pending

The SIMtoCARE Dente is the next generation dental training simulator

- Unprecedented realism of simulated patient cases to support safe and efficient learning
- Supports various dental procedures
- Adjustable patient head
- Upper and lower jaw for finger support
- Auto stereo 4k High resolution 3D display, no glasses
- High fidelity haptics in a large 100x100x100 mm³ working range
- Easy import and voxelization of intraoral scans, export to external tools
- Realtime objective assessment and cross-sectional views



website: www.simtocare.com

e-mail: info@simtocare.com

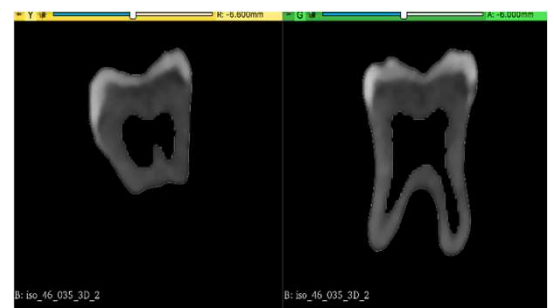
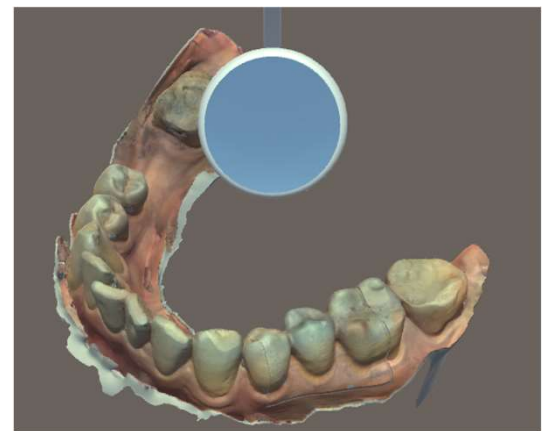
SIMtoCARE *Dente*



Patent pending

The SIMtoCARE Dente is height adjustable and can be used above a desk to save space

- Mixed Reality view combines VR with Real objects
- Instruments and tools to train manual dexterity, cariology, endo, crown prep and implantology procedures
- Tooling to import micro CT scans to create tooth models
- Tooling to merge CT scans with intraoral scans
- Student app for easy operation
- Teacher app for remote viewing, interface to lesson planning and reporting tools.



website: www.simtocare.com

e-mail: info@simtocare.com